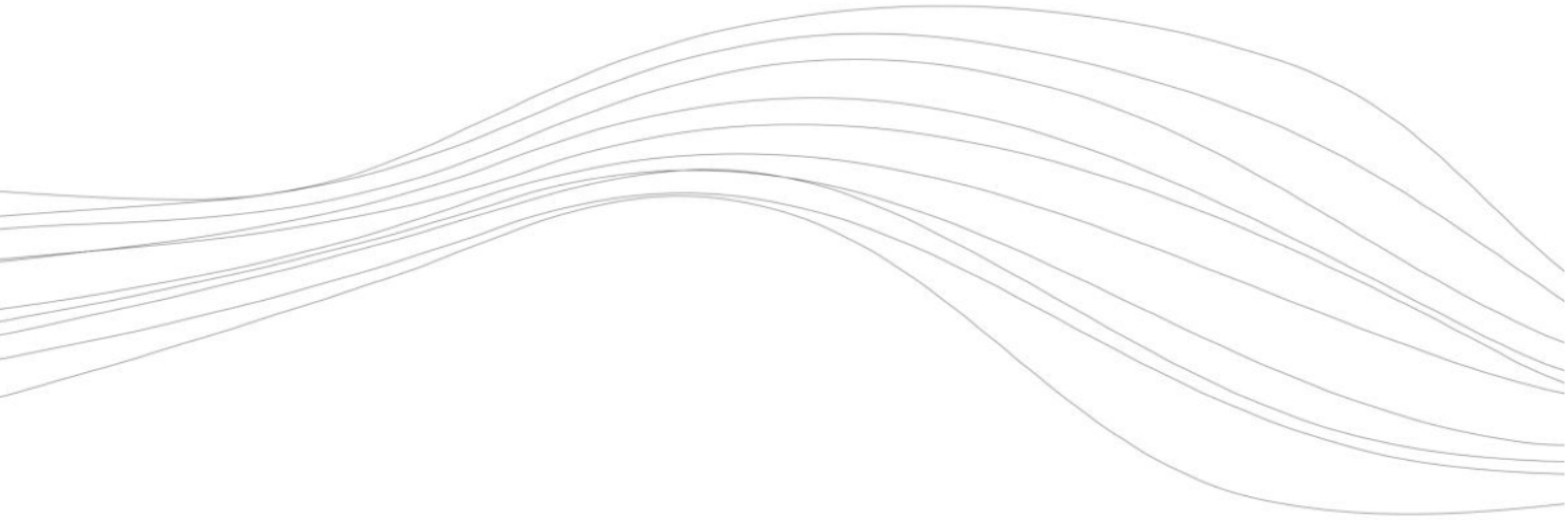




www.cbateknoloji.com



LED CEHPE GİYDİRME
KATALOĐU



İÇİNDEKİLER

03 HAKKIMIZDA

04 HİZMETLERİMİZ

08 ÜRÜNLERİMİZ

28 REFERANSLARIMIZ VE PROJELERİMİZ



LED CEHPE GİYDİRME

Binaların dış cepheleri, peyzaj aydınlatma, mimari ve sanatsal aydınlatma, havuz aydınlatma, sera, kapalı besi alanları, yeşil alanlar, kapalı otopark, asansör kuyularının aydınlatılması, bariyer kolları, tünel ve maden ocaklarının aydınlatılmasında, deniz içerisinde, gemi yat, gölet, su kaydıraqları ve benzeri ıslak alanlarda ve kenarlarında, marketlerin sebze ve meyve reyonları gibi birçok yerde led aydınlatma armatürü olarak kullanılmaktadır.



HİZMETLERİMİZ

AYDINLATMA ÇÖZÜMLERİMİZ

- DIŐ CEPHE AYDINLATMALARI
- PEYZAJ ALANLARI
- İÇ DEKORASYON

- HAVUZ/DENİZ
- OTOPARKLAR
- CAFE/RESTORANT



DIŐ CEPHE AYDINLATMALARI



PEYZAJ AYDINLATMALARI



İÇ DEKORASYON



HAVUZ/DENİZ



CAFE/RESTORANT



OTOPARK

Tesli edilen projelerin detaylı bilgileri için bizimle iletişime geçebilirsiniz. Tüm bilgileri bulunmaktadı.

TASARIM VE ANİMASYON



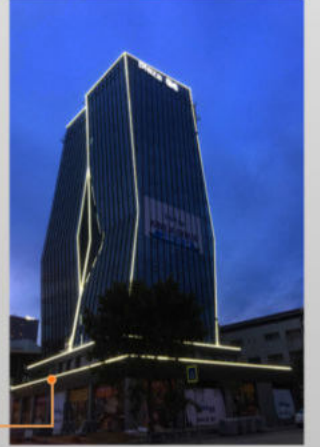
Tasarım ekibiz sizin tercihleriniz doğrultusunda alternatif, uygulanabilir ışıklandırma projeleri tasarlar. Ve bu tasarımların Animasyon ve Görsellerini hazırlayarak size sunar.

AIRLED Ürün Seçimi ve Ölçü Çıkarma



AIRLED 18-KZ

AIRLED 25-KL



Seçilen ışık tasarımı üzerine Teknik ekibimiz sizin projenizi keşfe çıkarak projenize en uygun Airled Ürünü seçer ve uygulama için ölçü çıkartılmaya başlanır.

Seçilen AIRLED Ürünlerinin Üretimi



Ölçüsü ve Ürünü seçilmiş projeniz İmalat ekibine bildirilerek, İmalat ekibi tarafından ivedi bir şekilde ürünün üretimi yapılmaya başlanır.

Kurulum ve Ürünü Yerleştirme



Hazırlanmış olan Aired ürünleriniz Dağcı ekibimiz tarafından uygulama alanına götürülür. Aired ürünleri ve yardımcı teknik ürünler yerleştirilmeye başlanır.

Test Etme



Yerleştirilen ürünler çalıştırılarak ürün kontrolü yapılır.

Garanti

IP68 100m Flexible Don't Fire Neon

Power Supplies Chemical Resistance UV/Water Resistance

CE RÖHS COMPLIANT

GARANTİ BELGESİ

İmalatçı Firma:
Ürünü: AIRLED AYDINLATMA TEKNOLOJİLERİ
İmalat sanayi ve ticaret limited şirketi
Adres: Mevlana Mah. Akasyalar Sk. No:2/A
Ataşehir/İSTANBUL
Telefon: +90 216 986 01 00
Web: www.aired.com.tr

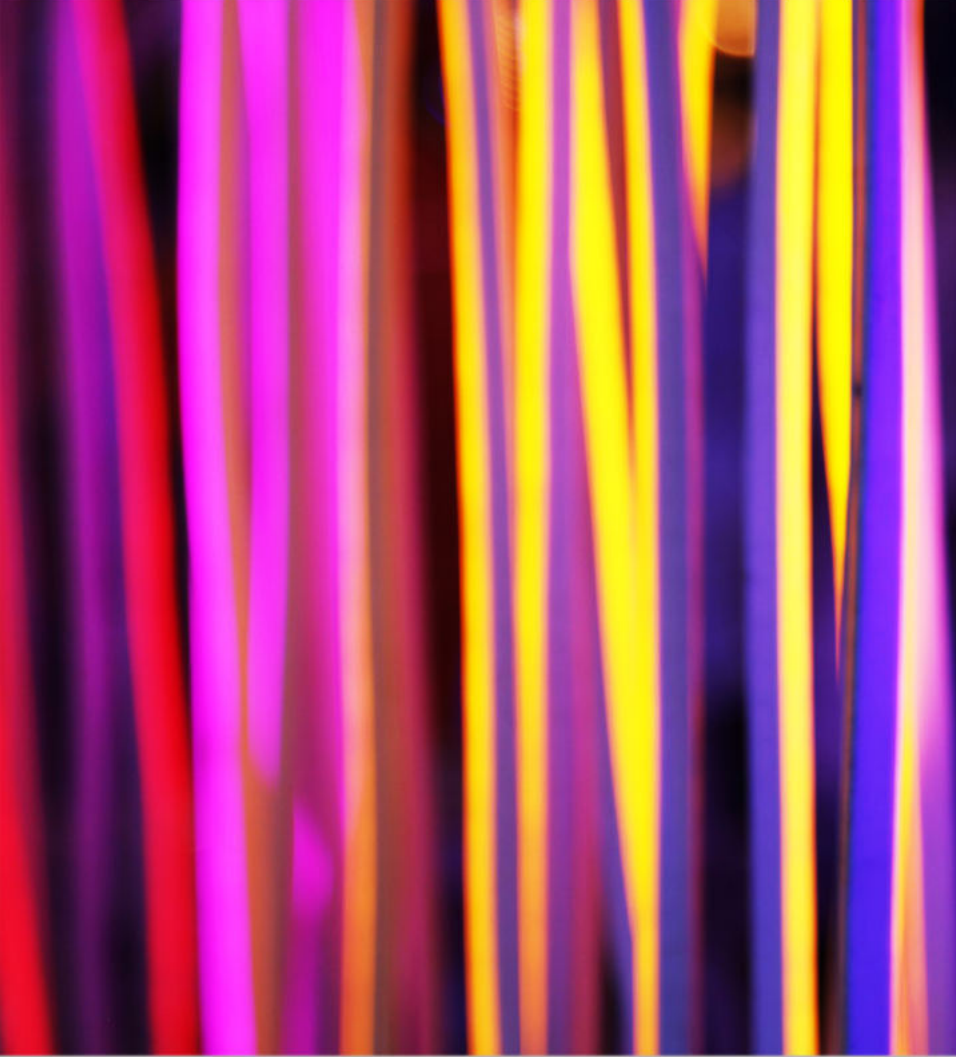
Firma Yetkilisinin:
İmza ve Kaşe:

Malın Cinsi:
Malın Led Türü:
Malın Teslim Tarihi:
Malın Garanti Süresi: 2 yıl

DİKKAT!

- Ürünlerimiz 2 yıl garantilidir.
- Ürün 12/24V ile çalışmaktadır. 220V şebeke elektriği vermeyiniz.
- Garanti etiketine yetkili personel dışında müdahale etmeyiniz. Müdahale edilmesi durumunda garanti kapsamı dışında kalacaktır.
- Aired ürünlerine kesici ve delici aletle zarar verilmesi durumunda garanti kapsamı sona erecektir.
- Aired ürünlerinin montajdan önce yetkili servis tarafından son kontrollerinin yapılmasını isteyiniz.
- Arıza durumunda yetkili servisi arayarak bilgi veriniz. Yetkili servis dışındaki müdahalelerde ürünün garantisi sona erecektir.

Tesli edilen projenizin toplam 2 yıl garantisi bulunmaktadır.



ÜRÜNLERİMİZ



Product Specifications/Ürün Özellikleri

Product Name	: Aired- AS11
Dimension	: H15 /W48 mm
PCB Increment	: Power Connection and cut point every 50 mm
LED pitch	: 10 mm
Chip	: Samsung
Beam Angle	: 180°
Colours	: White
Bin/Step	: 3 step Macadam ellipse
CRI	: 85
Lifetime	: 50.000 hours
Operating Temp.	: -40°: +200
IP Rating	: IP68
Mounting	: Nötr Silicon
Minumum bend radius	: 500 mm
Connection	: Hardwire tails or male/female connectors
Control	: 0-10/DMX/DALI
Case Type	: Flexible Silicon Case
Led Array	: 500mm led, 1000mm null



Performance Data/ Performans Verileri (for 1000mm)

Power consumption	: 13 W
Supply voltage	: 24 V DC
Supply current	: 0.5 A

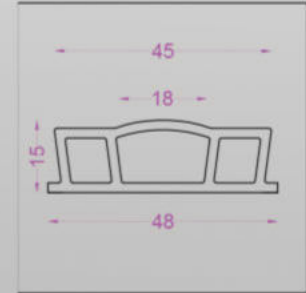
Color Characteristics / Renk Özellikleri

Correlated Color Temperatur (CCT)	: 6500K
Colour rendering index (CRI,RA)	: 85
Chromatic Coordinates	: 0.5 A

Light Output/ Işık Çıkışı

Total Light cutput (Lumens)	: 501
Luminaire efficacy (lm/W)	: 85.13
Beam angle	: 180°

Tecnical Drawing/ Teknik Çizim



Product and Power Options

Product Name/Number of LEDs	Max Length (m)	Light Color	Voltage(V)	Power (W/mt)	Luminous Flux (lm/m)	Weight (mt/gr)
AS11/60LED	150 m	CW	24V DC	13	501	340
AS11/60LED	150 m	NW	24V DC	13	501	340



WW, Warm White	3000K
NW, Natural White	4000K
CW, Cold White	6500K



Product Specifications/Ürün Özellikleri

Product Name	: Aired- 10KZ
Dimension	: H10 /W10mm
PCB Increment	: Power Connection and cut point every 50 mm
LED pitch	: 5 mm
Chip	: Samsung
Beam Angle	: 180°
Colours	: White
Bin/Step	: 3 step Macadam ellipse
CRI	: 85
Lifetime	: 50.000 hours
Operating Temp.	: -40°, +200
IP Rating	: IP68
Mounting	: Nötr Silicon
Minumum bend radius	: 50 mm
Connection	: Hardwire tails or male/female connectors
Control	: 0-10/DMX/DALI
Case Type	: Flexible Silicon Case



Performance Data/ Performans Verileri (for 1000mm)

Power consumption	: 13 W
Supply voltage	: 24 V DC
Supply current	: 0.5 A
Lumious flux	: 1540 Lm

Color Characteristics / Renk Özellikleri

Correlated Color Temperatur (CCT)	: 3000 K
Colour rendering index (CRI,RA)	: 85
Chromatic Coordinates	: 0.4 A

Light Output/ Işık Çıkışı

Total Light cutput (Lumens)	: 1540
Luminaire efficacy (lm/W)	: 85.13
Beam angle	: 180°

Tecnical Drawing/ Teknik Çizim



Product and Power Options

Product Name/Number of LEDs	Max Lenght (m)	Light Color	Voltage(V)	Power (W/mt)	Luminous Flux (lm/m)	Weight (mt/gr)
10KZ/126LED	5 m	WW	24V DC	13	1540	90
10KZ/126LED	5 m	NW	24V DC	13	1634	90
10KZ/126LED	5 m	CW	24V DC	13	1603	90
10KZ/126LED	5 m	WW	12V DC	7.2	770	90
10KZ/126LED	5 m	NW	12V DC	7.2	817	90
10KZ/126LED	5 m	CW	12V DC	7.2	802	90

Red	Green	Blue	Amber	WW; Warm White	3000K
				NW; Natural White	4000K
				CW; Cold White	6500K



Product Specifications/Ürün Özellikleri

Product Name	: Aired- 16 KZ
Dimension	: H16 /W16 mm
PCB Increment	: Power Connection and cut point every 50
LED pitch	: mm
Chip	: 5 mm
Beam Angle	: Samsung
Colours	: 180°
Bin/Step	: White
CRI	: 3 step Macadam ellipse
Lifetime	: 85
Operating Temp.	: 50.000 hours
IP Rating	: -40° . +200
Mounting	: IP68
Minumum bend radius	: Nötr Silicon
Connection	: 100 mm
Control	: Hardwire tails or male/female connectors
Case Type	: 0-10/DMX/DALI Flexible Silicon Case



Performance Data/ Performans Verileri (for 1000mm)

Power consumption	: 13 W
Supply voltage	: 24 V DC
Supply current	: 0.5 A
Lumious flux	: 1445 Lm

Color Characteristics / Renk Özellikleri

Correlated Color Temperatur (CCT)	: 3000 K
Colour rendering index (CRI,RA)	: 85
Chromatic Coordinates	: 0.4 A

Light Output/ Işık Çıkışı

Total Light cutput (Lumens)	: 1445
Luminaire efficacy (lm/W)	: 85.13
Beam angle	: 180°

Tecnical Drawing/ Teknik Çizim



Product and Power Options

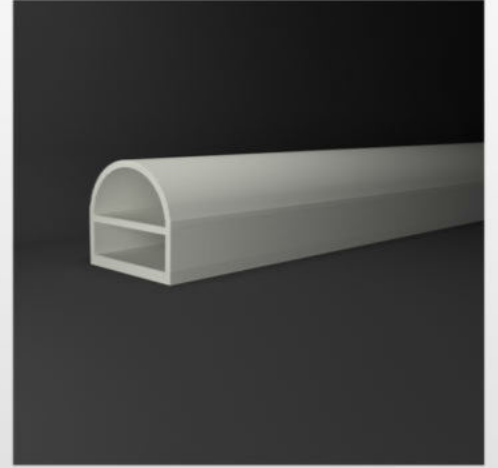
Product Name/Number of LEDs	Max Lenght (m)	Light Color	Voltage(V)	Power (W/mt)	Luminous Flux (lm/m)	Weight (mt/gr)
16 KZ/126LED	100 m	WW	24V DC	13	1445	225
16 KZ/126LED	100 m	NW	24V DC	13	1532	225
16 KZ/126LED	100 m	CW	24V DC	13	1503	225
16 KZ/126LED	100 m	WW	12V DC	7.2	723	225
16 KZ/126LED	100 m	NW	12V DC	7.2	766	225
16 KZ/126LED	100 m	CW	12V DC	7.2	702	225

Red	Green	Blue	Amber	WW; Warm White	3000K
				NW; Natural White	4000K
				CW; Cold White	6500K



Product Specifications/Ürün Özellikleri

Product Name	: Aired- 18 KZ
Dimension	: H16 /W18 mm
PCB Increment	: Power Connection and cut point every 50 mm
LED pitch	: 5 mm
Chip	: Samsung
Beam Angle	: 180°
Colours	: White
Bin/Step	: 3 step Macadam ellipse
CRI	: 85
Lifetime	: 50.000 hours
Operating Temp.	: -40°: +200
IP Rating	: IP68
Mounting	: Nötr Silicon
Minumum bend radius	: 100 mm
Connection	: Hardwire tails or male/female connectors
Control	: 0-10/DMX/DALI
Case Type	: Flexible Silicon Case



Performance Data/ Performans Verileri (for 1000mm)

Power consumption	: 13 W
Supply voltage	: 24 V DC
Supply current	: 0.5 A
Lumious flux	: 1445 Lm

Color Characteristics / Renk Özellikleri

Correlated Color Temperatur (CCT)	: 3000 K
Colour rendering index (CRI,RA)	: 85
Chromatic Coordinates	: 0.4 A

Light Output/ Işık Çıkışı

Total Light output (Lumens)	: 1445
Luminaire efficacy (lm/W)	: 85.13
Beam angle	: 180°

Tecnical Drawing/ Teknik Çizim



Product and Power Options

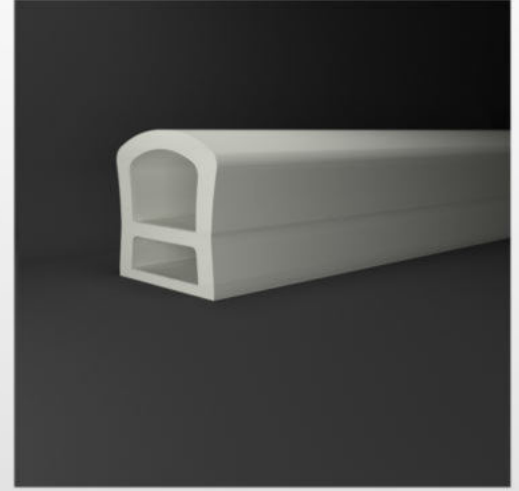
Product Name/Number of LEDs	Max Length (m)	Light Color	Voltage(V)	Power (W/mt)	Luminous Flux (lm/m)	Weight (mt/gr)
18KZ/126LED	100 m	WW	24V DC	13	1445	225
18KZ/126LED	100 m	NW	24V DC	13	1532	225
18KZ/126LED	100 m	CW	24V DC	13	1503	225
18KZ/126LED	100 m	WW	12V DC	7.2	723	225
18KZ/126LED	100 m	NW	12V DC	7.2	766	225
18KZ/126LED	100 m	CW	12V DC	7.2	702	225

Red	Green	Blue	Amber	WW; Warm White	3000K
				NW; Natural White	4000K
				CW; Cold White	6500K



Product Specifications/Ürün Özellikleri

Product Name	: Aired- 20N
Dimension	: H21 /W18 mm
PCB Increment	: Power Connection and cut point every 50 mm
LED pitch	: 5-8 mm
Chip	: Samsung
Beam Angle	: 180°
Colours	: White
Bin/Step	: 3 step Macadam ellipse
CRI	: 85
Lifetime	: 50.000 hours
Operating Temp.	: -40°, +200
IP Rating	: IP68
Mounting	: Nötr Silicon
Minumum bend radius	: 50 mm
Connection	: Hardwire tails or male/female connectors
Control	: 0-10/DMX/DALI
Case Type	: Flexible Silicon Case



Performance Data/ Performans Verileri (for 1000mm)

Power consumption	: 13 W
Supply voltage	: 24 V DC
Supply current	: 0.5 A
Lumious flux	: 1445 Lm

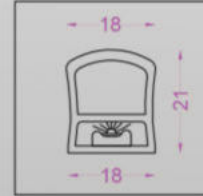
Color Characteristics / Renk Özellikleri

Correlated Color Temperatur (CCT)	: 3000 K
Colour rendering index (CRI,RA)	: 85
Chromatic Coordinates	: 0.4 A

Light Output/ Işık Çıkışı

Total Light output (Lumens)	: 1445
Luminaire efficacy (lm/W)	: 85.13
Beam angle	: 180°

Tecnical Drawing/ Teknik Çizim



Product and Power Options

Product Name/Number of LEDs	Max Length (m)	Light Color	Voltage(V)	Power (W/mt)	Luminous Flux (lm/m)	Weight (mt/gr)
20N/126LED	100 m	WW	24V DC	13	1445	220
20N/126LED	100 m	NW	24V DC	13	1532	220
20N/126LED	100 m	CW	24V DC	13	1503	220
20N/126LED	100 m	WW	12V DC	7.2	723	220
20N/126LED	100 m	NW	12V DC	7.2	766	220
20N/126LED	100 m	CW	12V DC	7.2	752	220

Red	Green	Blue	Amber	WW, Warm White	3000K
				NW, Natural White	4000K
				CW, Cold White	6500K



Product Specifications/Ürün Özellikleri

Product Name	: Aired- 25 KL
Dimension	: H21 /W30 mm
PCB Increment	: Power Connection and cut point every 50 mm
LED pitch	: 5-8 mm
Chip	: Samsung
Beam Angle	: 180°
Colours	: White
Bin/Step	: 3 step Macadam ellipse
CRI	: 85
Lifetime	: 50.000 hours
Operating Temp.	: -40°: +200
IP Rating	: IP68
Mounting	: Nötr Silicon
Minumum bend radius	: 50 mm
Connection	: Hardwire tails or male/female connectors
Control	: 0-10/DMX/DALI
Case Type	: Flexible Silicon Case



Performance Data/ Performans Verileri (for 1000mm)

Power consumption	: 13 W
Supply voltage	: 24 V DC
Supply current	: 0.5 A
Lumious flux	: 1445 Lm

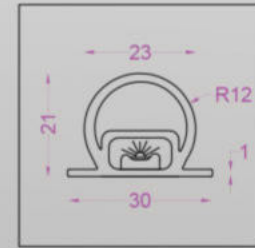
Color Characteristics / Renk Özellikleri

Correlated Color Temperatur (CCT)	: 3000 K
Colour rendering index (CRI,RA)	: 85
Chromatic Coordinates	: 0.4 A

Light Output/ Işık Çıkışı

Total Light output (Lumens)	: 1445
Luminaire efficacy (lm/W)	: 85.13
Beam angle	: 180°

Tecnical Drawing/ Teknik Çizim



Product and Power Options

Product Name/Number of LEDs	Max Lenght (m)	Light Color	Voltage(V)	Power (W/mt)	Luminous Flux (lm/m)	Weight (mt/gr)
25KL/126LED	100 m	WW	24V DC	13	1445	310
25KL/126LED	100 m	NW	24V DC	13	1532	310
25KL/126LED	100 m	CW	24V DC	13	1503	310
25KL/126LED	100 m	WW	12V DC	7.2	723	310
25KL/126LED	100 m	NW	12V DC	7.2	766	310
25KL/126LED	100 m	CW	12V DC	7.2	752	310

Red	Green	Blue	Amber	WW; Warm White	3000K
				NW; Natural White	4000K
				CW; Cold White	6500K



Product Specifications/Ürün Özellikleri

Product Name	: Aired- 25 KZ
Dimension	: H25 /W25 mm
PCB Increment	: Power Connection and cut point every 50 mm
LED pitch	: 5-8 mm
Chip	: Samsung
Beam Angle	: 180°
Colours	: White
Bin/Step	: 3 step Macadam ellipse
CRI	: 85
Lifetime	: 50.000 hours
Operating Temp.	: -40°+. +200
IP Rating	: IP68
Mounting	: Nötr Silicon
Minumum bend radius	: 50 mm
Connection	: Hardwire tails or male/female connectors
Control	: 0-10/DMX/DALI
Case Type	: Flexible Silicon Case



Performance Data/ Performans Verileri (for 1000mm)

Power consumption	: 13 W
Supply voltage	: 24 V DC
Supply current	: 0.5 A
Lumious flux	: 1445 Lm

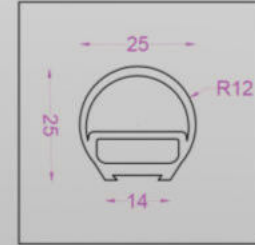
Color Characteristics / Renk Özellikleri

Correlated Color Temperatur (CCT)	: 3000 K
Colour rendering index (CRI,RA)	: 85
Chromatic Coordinates	: 0.4 A

Light Output/ Işık Çıkışı

Total Light output (Lumens)	: 1445
Luminaire efficacy (lm/W)	: 85.13
Beam angle	: 180°

Tecnical Drawing/ Teknik Çizim



Product and Power Options

Product Name/Number of LEDs	Max Lenght (m)	Light Color	Voltage(V)	Power (W/mt)	Luminous Flux (lm/m)	Weight (mt/gr)
25KZ/126LED	100 m	WW	24V DC	13	1445	310
25KZ/126LED	100 m	NW	24V DC	13	1532	310
25KZ/126LED	100 m	CW	24V DC	13	1503	310
25KZ/126LED	100 m	WW	12V DC	7.2	723	310
25KZ/126LED	100 m	NW	12V DC	7.2	766	310
25KZ/126LED	100 m	CW	12V DC	7.2	752	310

Red	Green	Blue	Amber	WW, Warm White	3000K
				NW, Natural White	4000K
				CW, Cold White	6500K



Product Specifications/Ürün Özellikleri

Product Name	: Aired- 30 KL
Dimension	: H28 /W35 mm
PCB Increment	: Power Connection and cut point every 50 mm
LED pitch	: 8-10 mm
Chip	: Samsung
Beam Angle	: 180°
Colours	: White
Bin/Step	: 3 step Macadam ellipse
CRI	: 85
Lifetime	: 50.000 hours
Operating Temp.	: -40°: +200
IP Rating	: IP68
Mounting	: Nötr Silicon
Minumum bend radius	: 410 mm
Connection	: Hardwire tails or male/female connectors
Control	: 0-10/DMX/DALI
Case Type	: Flexible Silicon Case



Performance Data/ Performans Verileri (for 1000mm)

Power consumption	: 13 W
Supply voltage	: 24 V DC
Supply current	: 0.5 A
Lumious flux	: 1445 Lm

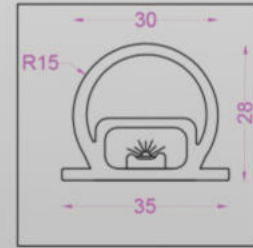
Color Characteristics / Renk Özellikleri

Correlated Color Temperatur (CCT)	: 3000 K
Colour rendering index (CRI,RA)	: 85
Chromatic Coordinates	: 0.4 A

Light Output/ Işık Çıkışı

Total Light cutput (Lumens)	: 1445
Luminaire efficacy (lm/W)	: 85.13
Beam angle	: 180°

Tecnical Drawing/ Teknik Çizim



Product and Power Options

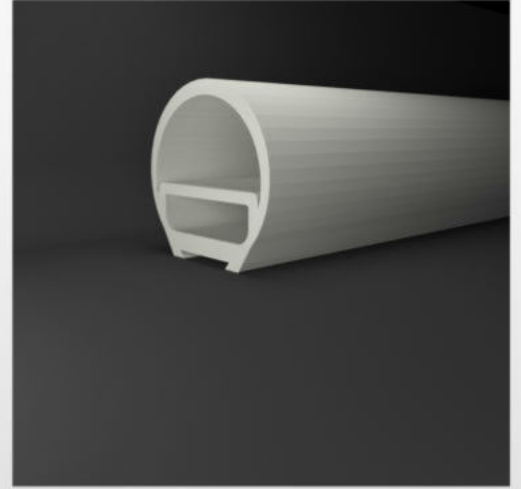
Product Name/Number of LEDs	Max Lenght (m)	Light Color	Voltage(V)	Power (W/mt)	Luminous Flux (lm/m)	Weight (mt/gr)
30KL/126LED	100 m	WW	24V DC	13	1445	390
30KL/126LED	100 m	NW	24V DC	13	1532	390
30KL/126LED	100 m	CW	24V DC	13	1503	390
30KL/126LED	100 m	WW	12V DC	7.2	723	390
30KL/126LED	100 m	NW	12V DC	7.2	766	390
30KL/126LED	100 m	CW	12V DC	7.2	752	390
30KL/7LED	100 m	RGB PIXEL	24V DC	14.4	--	390
30KL/72LED	100 m	RGBW	24V DC	19.2	--	390
30KL/72LED	100 m	RGB	24V DC	19.2	--	390

Red	Green	Blue	Amber	WW; Warm White	3000K
Red	Green	Blue	Amber	NW; Natural White	4000K
Red	Green	Blue	Amber	CW; Cold White	6500K
RGB	RGBW	RGBA			



Product Specifications/Ürün Özellikleri

Product Name	: Aired- 30 KZ
Dimension	: H30 /W30 mm
PCB Increment	: Power Connection and cut point every 50 mm
LED pitch	: 8-10 mm
Chip	: Samsung
Beam Angle	: 180°
Colours	: White
Bin/Step	: 3 step Macadam ellipse
CRI	: 85
Lifetime	: 50.000 hours
Operating Temp.	: -40°, +200
IP Rating	: IP68
Mounting	: Nötr Silicon
Minumum bend radius	: 50 mm
Connection	: Hardwire tails or male/female connectors
Control	: 0-10/DMX/DALI
Case Type	: Flexible Silicon Case



Performance Data/ Performans Verileri (for 1000mm)

Power consumption	: 13 W
Supply voltage	: 24 V DC
Supply current	: 0.5 A
Lumious flux	: 1445 Lm

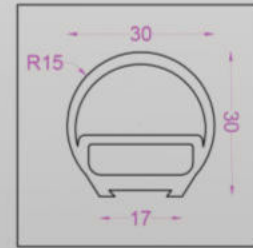
Color Characteristics / Renk Özellikleri

Correlated Color Temperatur (CCT)	: 3000 K
Colour rendering index (CRI,RA)	: 85
Chromatic Coordinates	: 0.4 A

Light Output/ Işık Çıkışı

Total Light cutput (Lumens)	: 1445
Luminaire efficacy (lm/W)	: 85.13
Beam angle	: 180°

Tecnical Drawing/ Teknik Çizim



Product and Power Options

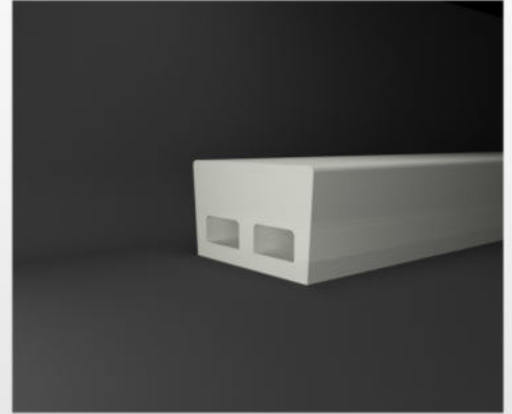
Product Name/Number of LEDs	Max Lenght (m)	Light Color	Voltage(V)	Power (W/mt)	Luminous Flux (lm/m)	Weight (mt/gr)
30KZ/126LED	100 m	WW	24V DC	13	1445	310
30KZ/126LED	100 m	NW	24V DC	13	1532	310
30KZ/126LED	100 m	CW	24V DC	13	1503	310
30KZ/126LED	100 m	WW	12V DC	7.2	723	310
30KZ/126LED	100 m	NW	12V DC	7.2	766	310
30KZ/126LED	100 m	CW	12V DC	7.2	751	310
30KZ/126LED	100 m	RGB PIXEL	24V DC	14.4	--	310
30KZ/126LED	100 m	RGBW	24V DC	19.2	--	310
30KZ/126LED	100 m	RGB	24V DC	19.2	--	310

Red	Green	Blue	Amber	WW; Warm White	3000K	
Red	Green	Blue	Amber	NW; Natural White	4000K	
Red	Green	Blue	Amber	CW; Cold White	6500K	
Red	Green	Blue	Amber	RGB	RGBW	RGBA



Product Specifications/Ürün Özellikleri

Product Name	: Aired-32 DK
Dimension	: H18 /W32 mm
PCB Increment	: Power Connection and cut point every 50 mm
LED pitch	: 8 mm
Chip	: Samsung
Beam Angle	: 180°
Colours	: White
Bin/Step	: 3 step Macadam ellipse
CRI	: 85
Lifetime	: 50.000 hours
Operating Temp.	: -40°, +200
IP Rating	: IP68
Mounting	: Nötr Silicon
Minumum bend radius	: 100 mm
Connection	: Hardwire tails or male/female connectors
Control	: 0-10/DMX/DALI
Case Type	: Flexible Silicon Case



Performance Data/ Performans Verileri (for 1000mm)

Power consumption	: 19.2 W
Supply voltage	: 24 V DC
Supply current	: 0.8 A
Lumious flux	: 1532 Lm

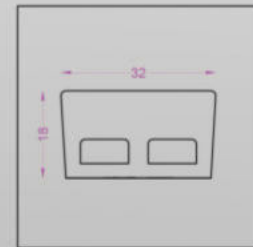
Color Characteristics / Renk Özellikleri

Correlated Color Temperatur (CCT)	4000 K
Colour rendering index (CRI,RA)	85
Chromatic Coordinates	0.8 A

Light Output/ Işık Çıkışı

Total Light cutput (Lumens)	1532
Luminaire efficacy (lm/W)	85.13
Beam angle	180°

Tecnical Drawing/ Teknik Çizim



Product and Power Options

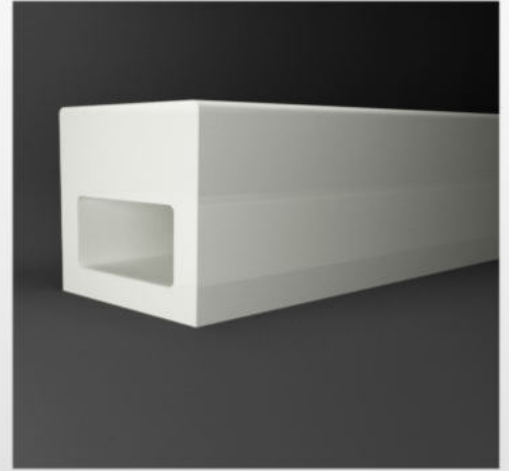
Product Name/Number of LEDs	Max Lenght (m)	Light Color	Voltage(V)	Power (W/mt)	Luminous Flux (lm/m)	Weight (mt/gr)
32DK/126LED	100 m	WW	24V DC	19.2	1445	580
32DK/126LED	100 m	NW	24V DC	19.2	1532	580
32DK/126LED	100 m	CW	24V DC	19.2	1503	580

Red	Green	Blue	Amber	WW; Warm White	3000K
				NW; Natural White	4000K
				CW; Cold White	6500K



Product Specifications/Ürün Özellikleri

Product Name	: Aired- Küp
Dimension	: H26 /W28 mm
PCB Increment	: Power Connection and cut point every 50 mm
LED pitch	: 8-10 mm
Chip	: Samsung
Beam Angle	: 180°
Colours	: White
Bin/Step	: 3 step Macadam ellipse
CRI	: 85
Lifetime	: 50.000 hours
Operating Temp.	: -40°: +200
IP Rating	: IP68
Mounting	: Nötr Silicon
Minumum bend radius	: 100 mm
Connection	: Hardwire tails or male/female connectors
Control	: 0-10/DMX/DALI
Case Type	: Flexible Silicon Case



Performance Data/ Performans Verileri (for 1000mm)

Power consumption	: 13 W
Supply voltage	: 24 V DC
Supply current	: 0.5 A
Lumious flux	: 1445 Lm

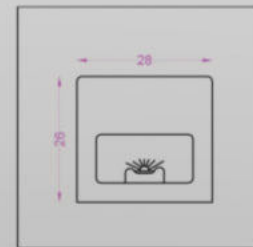
Color Characteristics / Renk Özellikleri

Correlated Color Temperatur (CCT)	: 3000 K
Colour rendering index (CRI,RA)	: 85
Chromatic Coordinates	: 0.4 A

Light Output/ Işık Çıkışı

Total Light cutput (Lumens)	: 1445
Luminaire efficacy (lm/W)	: 85.13
Beam angle	: 180°

Tecnical Drawing/ Teknik Çizim



Product and Power Options

Product Name/Number of LEDs	Max Lenght (m)	Light Color	Voltage(V)	Power (W/mt)	Luminous Flux (lm/m)	Weight (mt/gr)
KÜP/126LED	20 m	WW	24C DC	12	1445	930
KÜP/126LED	20 m	NW	24C DC	12	1532	930
KÜP/126LED	20 m	CW	24C DC	12	1503	930
KÜP/126LED	20 m	WW	12V DC	7,2	723	930
KÜP/126LED	20 m	NW	12V DC	7,2	766	930
KÜP/126LED	20 m	CW	12V DC	7,2	751	930
KÜP/126LED	20 m	RGB-PIXEL	24V DC	14,4	-	930
KÜP/126LED	20 m	RGBW	24V DC	19,2	-	930
KÜP/126LED	20 m	RGB	24V DC	19,2	-	930

Red	Green	Blue	Amber	WW; Warm White	3000K
Red	Green	Blue	Amber	NW; Natural White	4000K
Red	Green	Blue	Amber	CW; Cold White	6500K
Red	Green	Blue	Amber	RGB	
Red	Green	Blue	Amber	RGBW	
Red	Green	Blue	Amber	RGBA	



Product Specifications/Ürün Özellikleri

Product Name	: Aired- 40 KL
Dimension	: H31 /W41 mm
PCB Increment	: Power Connection and cut point every 50 mm
LED pitch	: 10 mm
Chip	: Samsung
Beam Angle	: 180°
Colours	: White
Bin/Step	: 3 step Macadam ellipse
CRI	: 85
Lifetime	: 50.000 hours
Operating Temp.	: -40°+. +200
IP Rating	: IP68
Mounting	: Nötr Silicon
Minumum bend radius	: 300 mm
Connection	: Hardwire tails or male/female connectors
Control	: 0-10/DMX/DALI
Case Type	: Flexible Silicon Case



Performance Data/ Performans Verileri (for 1000mm)

Power consumption	: 13 W
Supply voltage	: 24 V DC
Supply current	: 0.5 A
Lumious flux	: 1445 Lm

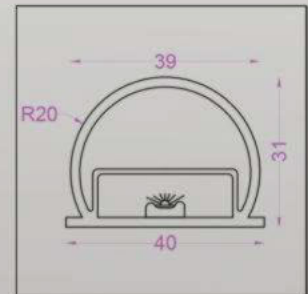
Color Characteristics / Renk Özellikleri

Correlated Color Temperatur (CCT)	: 3000 K
Colour rendering index (CRI,RA)	: 85
Chromatic Coordinates	: 0.4 A

Light Output/ Işık Çıkışı

Total Light output (Lumens)	: 1445
Luminaire efficacy (lm/W)	: 85.13
Beam angle	: 180°

Tecnical Drawing/ Teknik Çizim



Product and Power Options

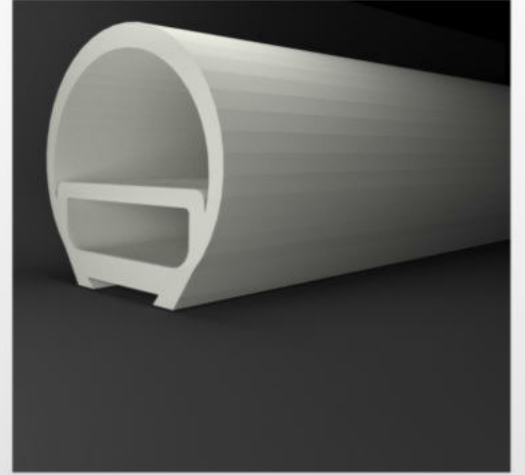
Product Name/Number of LEDs	Max Lenght (m)	Light Color	Voltage(V)	Power (W/mt)	Luminous Flux (lm/m)	Weight (mt/gr)
40KL/126LED	100 m	WW	24V DC	13	1445	400
40KL/126LED	100 m	NW	24V DC	13	1532	400
40KL/126LED	100 m	CW	24V DC	13	1503	400
40KL/126LED	100 m	WW	12V DC	7.2	723	400
40KL/126LED	100 m	NW	12V DC	7.2	766	400
40KL/126LED	100 m	CW	12V DC	7.2	752	400
40KL/72LED	100 m	RGB PIXEL	24V DC	14.4	--	400
40KL/72LED	100 m	RGBW	24V DC	19.2	--	400
40KL/72LED	100 m	RGB	24V DC	19.2	--	400

Red	Green	Blue	Amber	WW, Warm White	3000K
Red	Green	Blue	Amber	NW, Natural White	4000K
Red	Green	Blue	Amber	CW, Cold White	6500K
RGB	RGBW	RGBA			



Product Specifications/Ürün Özellikleri

Product Name	: Aired- 40 KZ
Dimension	: H40 /W41 mm
PCB Increment	: Power Connection and cut point every 50 mm
LED pitch	: 10 mm
Chip	: Samsung
Beam Angle	: 180°
Colours	: White
Bin/Step	: 3 step Macadam ellipse
CRI	: 85
Lifetime	: 50.000 hours
Operating Temp.	: -40° , +200
IP Rating	: IP68
Mounting	: Nötr Silicon
Minumum bend radius	: 600 mm
Connection	: Hardwire tails or male/female connectors
Control	: 0-10/DMX/DALI
Case Type	: Flexible Silicon Case



Performance Data/ Performans Verileri (for 1000mm)

Power consumption	: 13 W
Supply voltage	: 24 V DC
Supply current	: 0.5 A
Lumious flux	: 1445 Lm

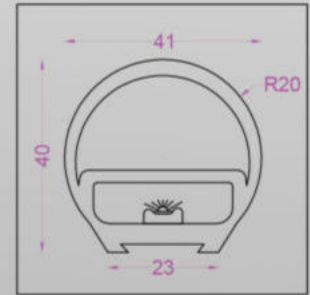
Color Characteristics / Renk Özellikleri

Correlated Color Temperatur (CCT)	: 3000 K
Colour rendering index (CRI,RA)	: 85
Chromatic Coordinates	: 0.4 A

Light Output/ Işık Çıkışı

Total Light cutput (Lumens)	: 1445
Luminaire efficacy (lm/W)	: 85.13
Beam angle	: 180°

Tecnical Drawing/ Teknik Çizim



Product and Power Options

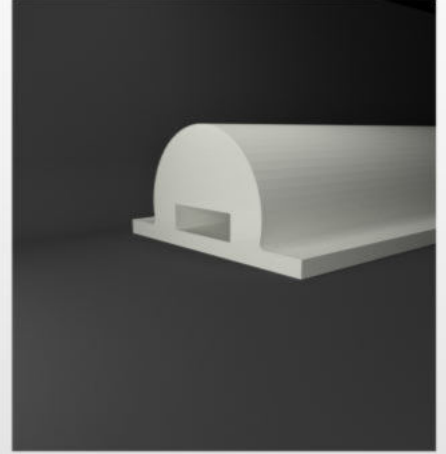
Product Name/Number of LEDs	Max Lenght (m)	Light Color	Voltage(V)	Power (W/mt)	Luminous Flux (lm/m)	Weight (mt/gr)
40KZ/126LED	100 m	WW	24V DC	13	1445	500
40KZ/126LED	100 m	NW	24V DC	13	1532	500
40KZ/126LED	100 m	CW	24V DC	13	1503	500
40KZ/126LED	100 m	WW	12V DC	7.2	723	500
40KZ/126LED	100 m	NW	12V DC	7.2	766	500
40KZ/126LED	100 m	CW	12V DC	7.2	751	500
40KZ/126LED	100 m	RGB PIXEL	24V DC	14.4	--	500
40KZ/126LED	100 m	RGBW	24V DC	19.2	--	500
40KZ/126LED	100 m	RGB	24V DC	19.2	--	500

Red	Green	Blue	Amber	WW, Warm White	3000K
Red	Green	Blue	Amber	NW, Natural White	4000K
Red	Green	Blue	Amber	CW, Cold White	6500K
RGB	RGBW	RGBA			



Product Specifications/Ürün Özellikleri

Product Name	: Aired- 48KL
Dimension	: H23 /W48 mm
PCB Increment	: Power Connection and cut point every 50 mm
LED pitch	: 8 mm
Chip	: Samsung
Beam Angle	: 180°
Colours	: White
Bin/Step	: 3 step Macadam ellipse
CRI	: 85
Lifetime	: 50.000 hours
Operating Temp.	: -40°: +200
IP Rating	: IP68
Mounting	: Nötr Silicon
Minumum bend radius	: 50 mm
Connection	: Hardwire tails or male/female connectors
Control	: 0-10/DMX/DALI
Case Type	: Flexible Silicon Case



Performance Data/ Performans Verileri (for 1000mm)

Power consumption	: 13 W
Supply voltage	: 24 V DC
Supply current	: 0.5 A
Lumious flux	: 860 Lm

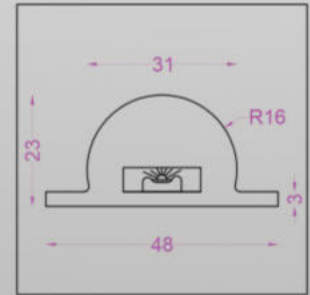
Color Characteristics / Renk Özellikleri

Correlated Color Temperatur (CCT)	: 3000 K
Colour rendering index (CRI,RA)	: 85
Chromatic Coordinates	: 0.4 A

Light Output/ Işık Çıkışı

Total Light cutput (Lumens)	: 860
Luminaire efficacy (lm/W)	: 85.13
Beam angle	: 180°

Tecnical Drawing/ Teknik Çizim



Product and Power Options

Product Name/Number of LEDs	Max Lenght (m)	Light Color	Voltage(V)	Power (W/mt)	Luminous Flux (lm/m)	Weight (mt/gr)
48KL/126LED	100 m	WW	24C DC	12	1500L/M	750
48KL/126LED	100 m	NW	24C DC	12	925L/M	750
48KL/126LED	100 m	CW	24C DC	12	925L/M	750
48KL/126LED	100 m	WW	12V DC	7,2	750L/M	750
48KL/126LED	100 m	NW	12V DC	7,2	460L/M	750
48KL/126LED	100 m	CW	12V DC	7,2	460L/M	750
48KL/126LED	100 m	RGB-PIXEL	24V DC	14,4	-	750
48KL/126LED	100 m	RGBW	24V DC	19,2	-	750
48KL/126LED	100 m	RGB	24V DC	19,2	-	750

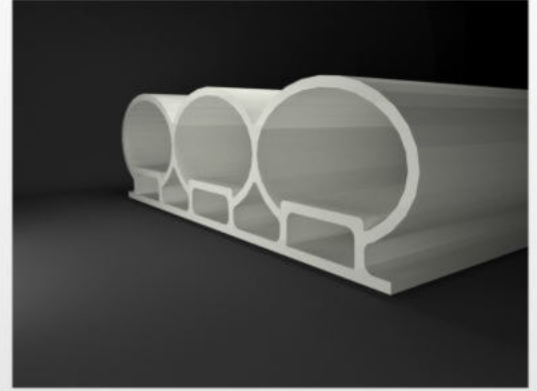


● WW: Warm White 3000K
● NW: Natural White 4000K
● CW: Cold White 6500K



Product Specifications/Ürün Özellikleri

Product Name	: Aired- 120 KL
Dimension	: H35 /W115mm
PCB Increment	: Power Connection and cut point every 50 mm
LED pitch	: 10 mm
Chip	: Samsung
Beam Angle	: 180°
Colours	: White
Bin/Step	: 3 step Macadam ellipse
CRI	: 85
Lifetime	: 50.000 hours
Operating Temp.	: -40°, +200
IP Rating	: IP68
Mounting	: Nötr Silicon
Minumum bend radius	: 1500 mm
Connection	: Hardwire tails or male/female
Control	: 0-10/DMX/DALI
Case Type	: Flexible Silicon Case



Performance Data/ Performans Verileri (for 1000mm)

Power consumption	: 39 W
Supply voltage	: 24 V DC
Supply current	: 0.5 A
Lumious flux	: 1445 Lm

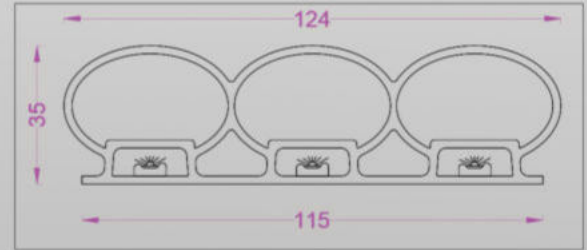
Color Characteristics / Renk Özellikleri

Correlated Color Temperatur (CCT)	: 3000 K
Colour rendering index (CRI,RA)	: 85
Chromatic Coordinates	: 0.4 A

Light Output/ Işık Çıkışı

Total Light output (Lumens)	: 1445
Luminaire efficacy (lm/W)	: 85.13
Beam angle	: 180°

Tecnical Drawing/ Teknik Çizim



Product and Power Options

Product Name/Number of LEDs	Max Length (m)	Light Color	Voltage(V)	Power (W/mt)	Luminous Flux (lm/m)	Weight (mt/gr)
120KL/126LED	100 m	WW	24V DC	39	1445	1050
120KL/126LED	100 m	NW	24V DC	39	1532	1050
120KL/126LED	100 m	CW	24V DC	39	1503	1050
120KL/126LED	100 m	WW	12V DC	21.6	723	1050
120KL/126LED	100 m	NW	12V DC	21.6	766	1050
120KL/126LED	100 m	CW	12V DC	21.6	752	1050
120KL/72LED	100 m	RGB PIXEL	24V DC	43,2	--	1050
120KL/72LED	100 m	RGBW	24V DC	57,6	--	1050
120KL/72LED	100 m	RGB	24V DC	57,6	--	1050



WW, Warm White	3000K
NW, Natural White	4000K
CW, Cold White	6500K



Product Specifications/Ürün Özellikleri

Product Name	: Aired- AHU
Dimension	: H28 /W37 mm
PCB Increment	: Power Connection and cut point every 50 mm
LED pitch	: 10 mm
Chip	: Samsung
Beam Angle	: 180°
Colours	: White
Bin/Step	: 3 step Macadam ellipse
CRI	: 85
Lifetime	: 50.000 hours
Operating Temp.	: -40°, +200
IP Rating	: IP68
Mounting	: Nötr Silicon
Minumum bend radius	: 360 mm
Connection	: Hardwire tails or male/female connectors
Control	: 0-10/DMX/DALI
Case Type	: Flexible Silicon Case



Performance Data/ Performans Verileri (for 1000mm)

Power consumption	: 13 W
Supply voltage	: 24 V DC
Supply current	: 0.5 A

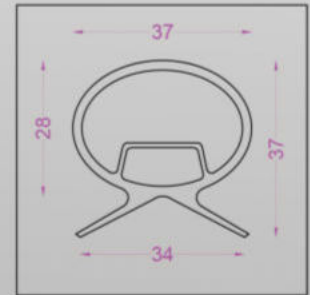
Color Characteristics / Renk Özellikleri

Correlated Color Temperatur (CCT)	: 3000K
Colour rendering index (CRI,RA)	: 85
Chromatic Coordinates	: 0.4 A

Light Output/ Işık Çıkışı

Total Light cutput (Lumens)	: 1445
Luminaire efficacy (lm/W)	: 85.13
Beam angle	: 180°

Tecnical Drawing/ Teknik Çizim



Product and Power Options

Product Name/Number of LEDs	Max Lenght (m)	Light Color	Voltage(V)	Power (W/mt)	Luminous Flux (lm/m)	Weight (mt/gr)
AHU/126LED	100 m	WW	24V DC	13	1445	400
AHU/126LED	100 m	NW	24V DC	13	1532	400
AHU/126LED	100 m	CW	24V DC	13	1503	400
AHU/126LED	100 m	WW	12V DC	7.2	723	400
AHU/126LED	100 m	NW	12V DC	7.2	766	400
AHU/126LED	100 m	CW	12V DC	7.2	752	400
AHU/72LED	100 m	RGB PIXEL	24V DC	14.4	--	400
AHU/72LED	100 m	RGBW	24V DC	19.2	--	400
AHU/72LED	100 m	RGB	24V DC	19.2	--	400

Red	Green	Blue	Amber	WW; Warm White	3000K
				NW; Natural White	4000K
				CW; Cold White	6500K



Product Specifications/Ürün Özellikleri

Product Name	: Aired- BRY
Dimension	: H30 /W35 mm
PCB Increment	: Power Connection and cut point every 50 mm
LED pitch	: 5 mm
Chip	: Samsung
Beam Angle	: 180°
Colours	: White
Bin/Step	: 3 step Macadam ellipse
CRI	: 85
Lifetime	: 50.000 hours
Operating Temp.	: -40°, +200
IP Rating	: IP68
Mounting	: Channel Input
Minumum bend radius	: 100 mm
Connection	: Hardwire tails or male/female connectors
Control	: 0-10/DMX/DALI
Case Type	: Flexible Silicon Case



Performance Data/ Performans Verileri (for 1000mm)

Power consumption	: 14 W
Supply voltage	: 24 V DC
Supply current	: 0.5 A
Lumious flux	: 1445 Lm

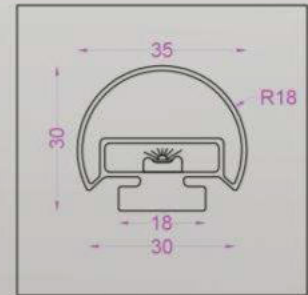
Color Characteristics / Renk Özellikleri

Correlated Color Temperatur (CCT)	: RGB
Colour rendering index (CRI,RA)	: 85
Chromatic Coordinates	: 0.4 A

Light Output/ Işık Çıkışı

Total Light output (Lumens)	: 1445
Luminaire efficacy (lm/W)	: 85.13
Beam angle	: 180°

Tecnical Drawing/ Teknik Çizim



Product and Power Options

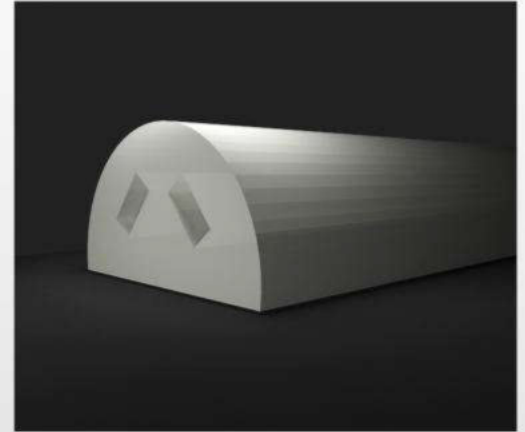
Product Name/Number of LEDs	Max Length (m)	Light Color	Voltage(V)	Power (W/mt)	Luminous Flux (lm/m)	Weight (mt/gr)
BRY/126LED	100 m	WW	24C DC	12	1500L/M	500
BRY/126LED	100 m	NW	24C DC	12	925L/M	500
BRY/126LED	100 m	CW	24C DC	12	925L/M	500
BRY/126LED	100 m	WW	12V DC	7,2	750L/M	500
BRY/126LED	100 m	NW	12V DC	7,2	460L/M	500
BRY/126LED	100 m	CW	12V DC	7,2	460L/M	500
BRY/126LED	100 m	RGB-PIXEL	24V DC	14,4	-	500
BRY/126LED	100 m	RGBW	24V DC	19,2	-	500
BRY/126LED	100 m	RGB	24V DC	19,2	-	500

Red	Green	Blue	Amber	WW, Warm White	3000K
				NW, Natural White	4000K
				CW, Cold White	6500K
RGB	RGBW	RGBA			



Product Specifications/Ürün Özellikleri

Product Name	: Aired- 75 HZK
Dimension	: H43 /W75 mm
PCB Increment	: Power Connection and cut point every 50 mm
LED pitch	: 10 mm
Chip	: Samsung
Beam Angle	: 180°
Colours	: White
Bin/Step	: 3 step Macadam ellipse
CRI	: 85
Lifetime	: 50.000 hours
Operating Temp.	: -40°, +200
IP Rating	: IP68
Mounting	: Nötr Silicon
Minumum bend radius	: -
Connection	: Hardwire tails or male/female connectors
Control	: 0-10/DMX/DALI
Case Type	: Flexible Silicon Case
Usage Area	: Speed Breaker



Performance Data/ Performans Verileri (for 1000mm)

Power consumption	: 19.2 W
Supply voltage	: 24 V DC
Supply current	: 0.5 A

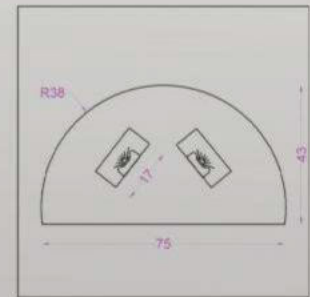
Color Characteristics / Renk Özellikleri

Correlated Color Temperatur (CCT)	: -
Colour rendering index (CRI,RA)	: 85
Chromatic Coordinates	: 0.4 A

Light Output/ Işık Çıkışı

Total Light cutput (Lumens)	: -
Luminaire efficacy (lm/W)	: 85.13
Beam angle	: 180°

Tecnical Drawing/ Teknik Çizim



Product and Power Options

Product Name/Number of LEDs	Max Lenght (m)	Light Color	Voltage(V)	Power (W/mt)	Luminous Flux (lm/m)	Weight (mt/gr)
75HZK/120LED	12 m	RED-GREEN	24V DC	19.2	-	1600

Red	Green	Blue	Amber	WW; Warm White	3000K
				NW; Natural White	4000K
				CW; Cold White	6500K



Product Specifications/Ürün Özellikleri

Product Name	: Aired- 90 SP
Dimension	: H27 /W8-43mm
PCB Increment	: Power Connection and cut point every 50 mm
LED pitch	: 10 mm
Chip	: Samsung
Beam Angle	: 90°
Colours	: White
Bin/Step	: 3 step Macadam ellipse
CRI	: 85
Lifetime	: 50.000 hours
Operating Temp.	: -40°, +200
IP Rating	: IP68
Mounting	: Nötr Silicon
Minumum bend radius	: 1500 mm
Connection	: Hardwire tails or male/female connectors
Control	: 0-10/DMX/DALI
Case Type	: Flexible Silicon Case



Performance Data/ Performans Verileri (for 1000mm)

Power consumption	: 13 W
Supply voltage	: 24 V DC
Supply current	: 0.5 A
Lumious flux	: 1445 Lm

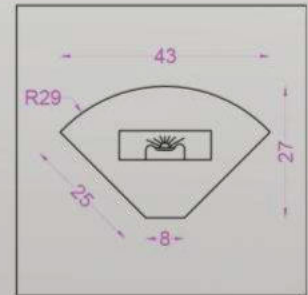
Color Characteristics / Renk Özellikleri

Correlated Color Temperatur (CCT)	: 3000 K
Colour rendering index (CRI,RA)	: 85
Chromatic Coordinates	: 0.4 A

Light Output/ Işık Çıkışı

Total Light output (Lumens)	: 1445
Luminaire efficacy (lm/W)	: 85.13
Beam angle	: 90°

Tecnical Drawing/ Teknik Çizim



Product and Power Options

Product Name/Number of LEDs	Max Length (m)	Light Color	Voltage(V)	Power (W/mt)	Luminous Flux (lm/m)	Weight (mt/gr)
90SP/126LED	100 m	WW	24V DC	13	1445	400
90SP/126LED	100 m	NW	24V DC	13	1532	400
90SP/126LED	100 m	CW	24V DC	13	1503	400
90SP/126LED	100 m	WW	12V DC	7.2	723	400
90SP/126LED	100 m	NW	12V DC	7.2	766	400
90SP/126LED	100 m	CW	12V DC	7.2	752	400
90SP/72LED	100 m	RGB PIXEL	24V DC	14.4	--	400
90SP/72LED	100 m	RGBW	24V DC	19.2	--	400
90SP/72LED	100 m	RGB	24V DC	19.2	--	400

Red	Green	Blue	Amber	WW, Warm White	3000K
Red	Green	Blue	Amber	NW, Natural White	4000K
Red	Green	Blue	Amber	CW, Cold White	6500K
RGB	RGBW	RGBA			





**REFERANSLARIMIZ
VE
PROJELERİMİZ**



BAŞ YAPIT GÜMÜŞ PANORAMA

ESENYURT / İSTANBUL



www.airled.com.tr



SUN PLAZA

MASLAK / İSTANBUL



ŞUA YAPI

FİKİRTEPE / İSTANBUL



LA MARİN
KARTAL / İSTANBUL



ÖZDEŞ AVM
BALÇOVA / İZMİR





VERSUS RESİM YAPI

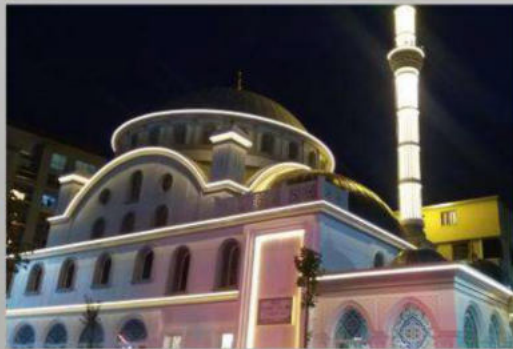
KARTAL/ İSTANBUL





TAŞDELEN CAMİ

ÇEKMEKÖY / İSTANBUL





PLAZA 34

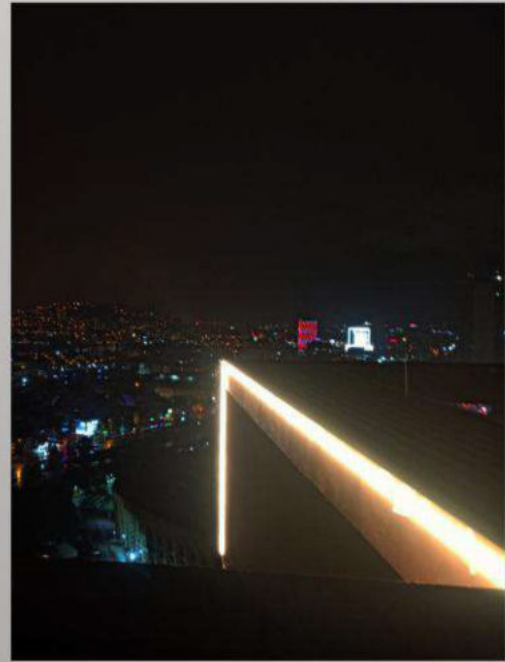
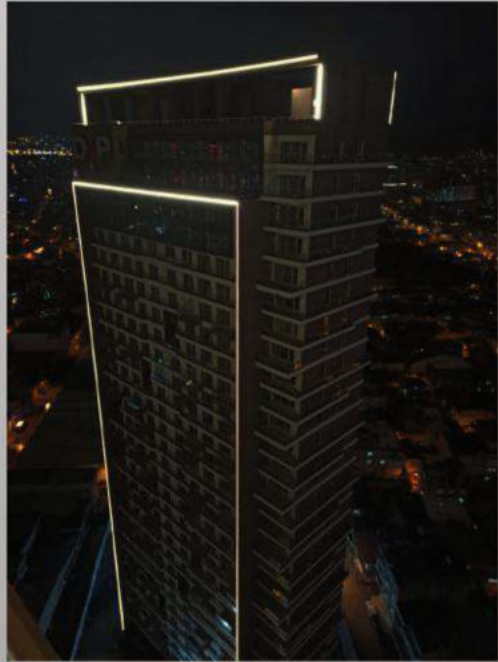
BASIN EKSPRES YOLU / İSTANBUL



www.airled.com.tr



DAP YAPI
BORNOVA / İZMİR





PİLSAN

LÜLERBURGAZ / KIRKLARELİ

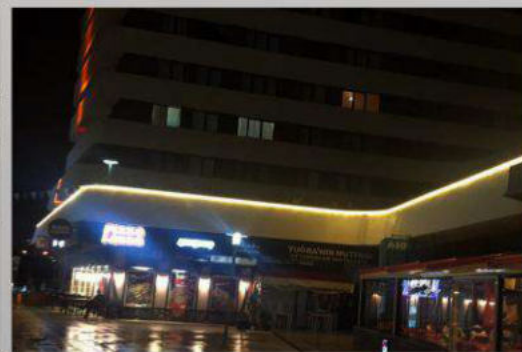


www.airled.com.tr



DUMANKAYA CADDE

KURTKÖY / İSTANBUL





ARIFAN
ÜMRANIYE / İSTANBUL





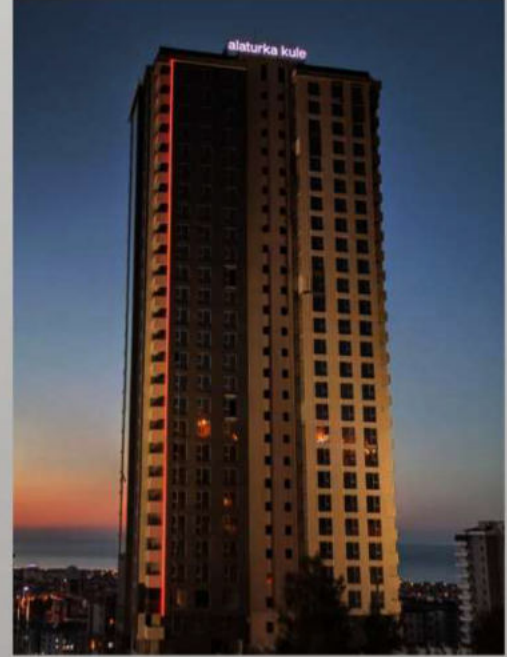
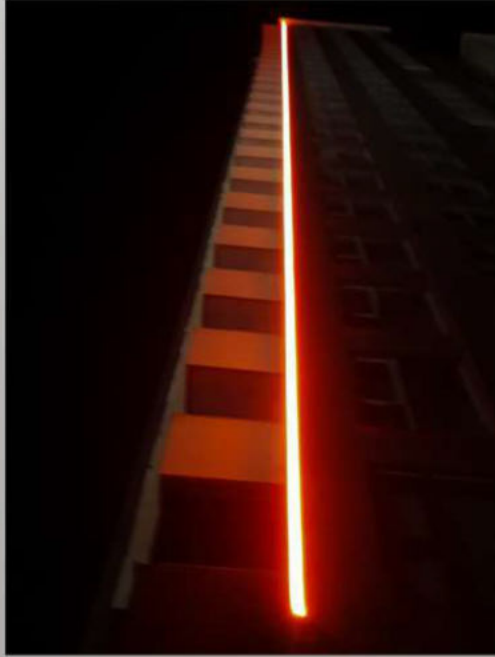
MADO
KURTKÖY / İSTANBUL





ALATURKA KULE

ATAKULE / SAMSUN

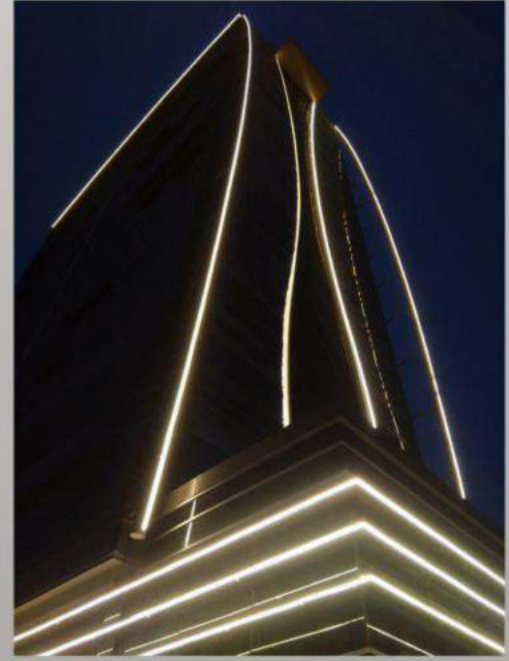


www.airled.com.tr



MARRIOT OTEL

ATAŞEHİR / İSTANBUL

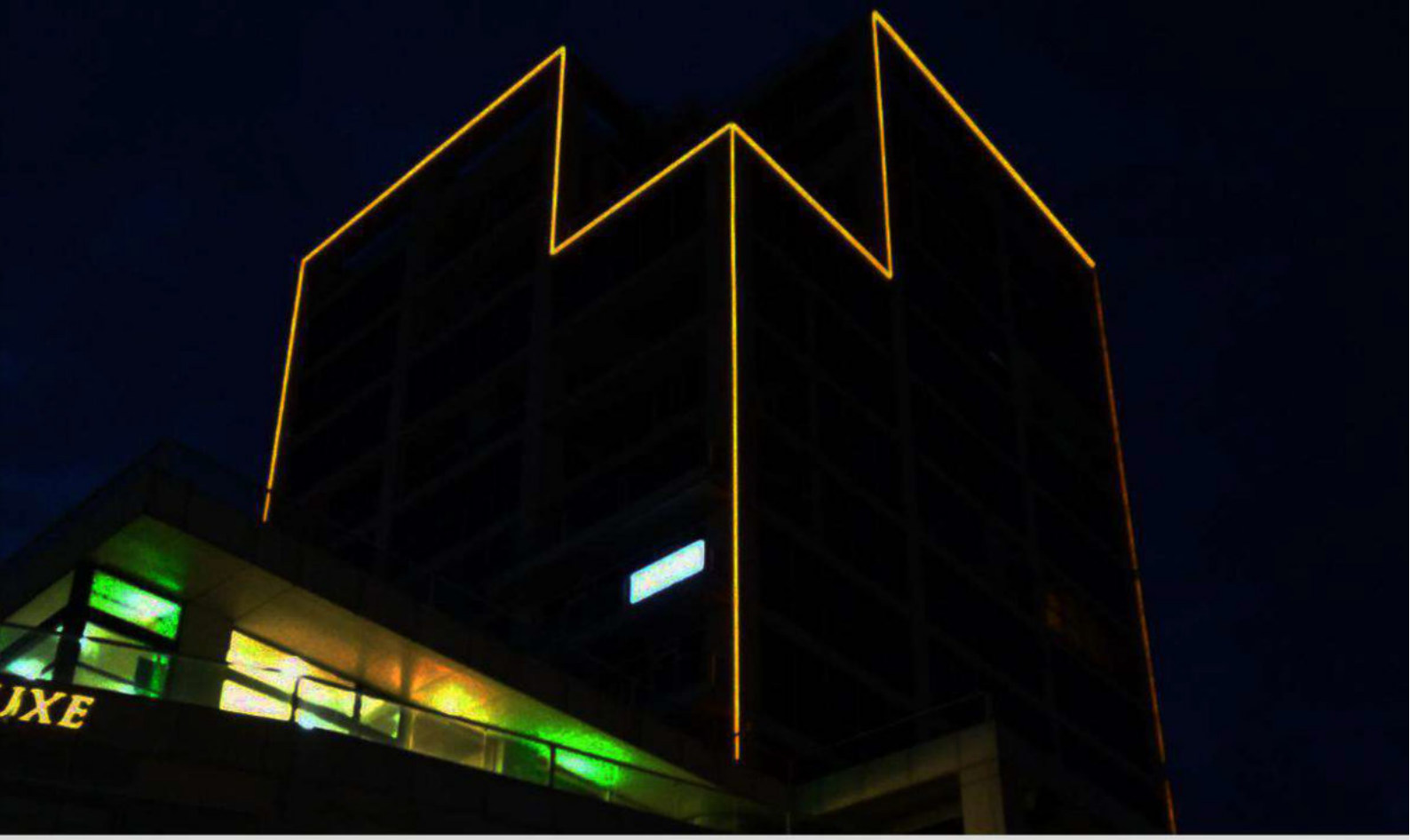




ÖZDİLEK AVM
MERKEZ / AFYONKARAHİSAR



ÖZÜER AVM
İZMİT / KOCAELİ



İŞ MEKAN PLAZA
AVCILAR / İSTANBUL



ANTALYA AQUARIUM
KONYAALTI / ANTALYA



ÖZEL KONUT PROJESİ

BURSA

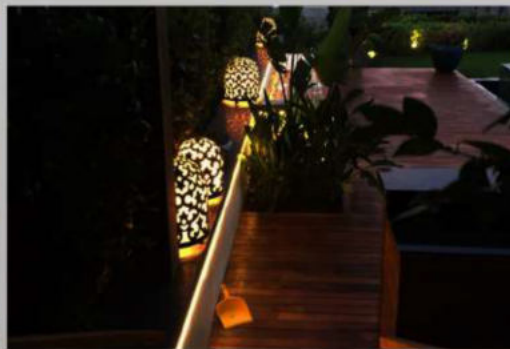


www.airled.com.tr



MANDARİN VİLLALARI

BODRUM / MUĞLA



www.airled.com.tr



RADYO VE TELEVİZYON KULESİ

ÇAMLICA / İSTANBUL

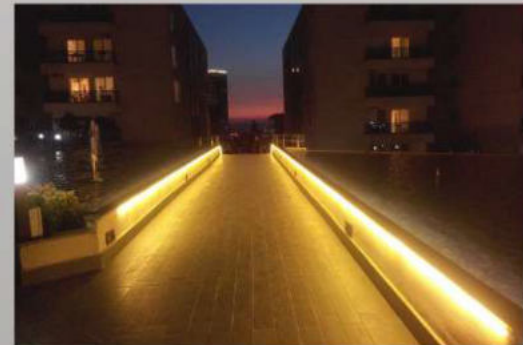


www.airled.com.tr



GÜNEŞLİ PARK GARDENYA

GÜNEŞLİ / İSTANBUL



www.airled.com.tr

MERIT LIFE



MERİT LIFE

ÜMRANIYE / İSTANBUL

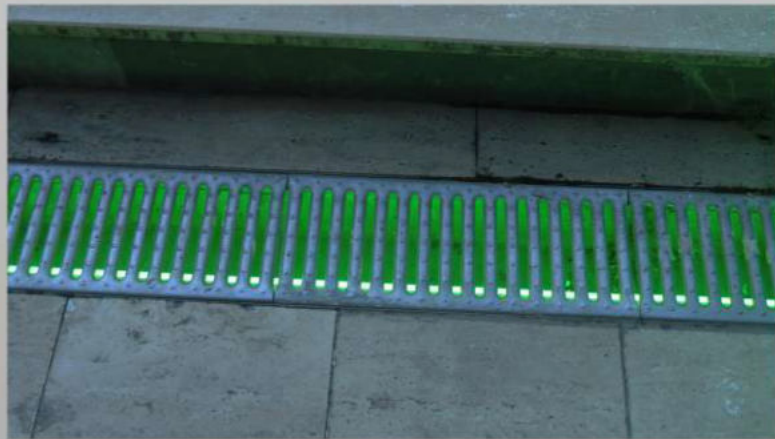


www.airled.com.tr



SALOON RESİDENCE

ÜMRANIYE / İSTANBUL



www.airled.com.tr



İÇ MEKAN AYDINLATMA
CAFE - RESTAURANT



BEBEK BALIK RESTAURANT
PENDİK / İSTANBUL



AVM OTOYARK GİRİŐİ

ACIBADEM / İSTANBUL



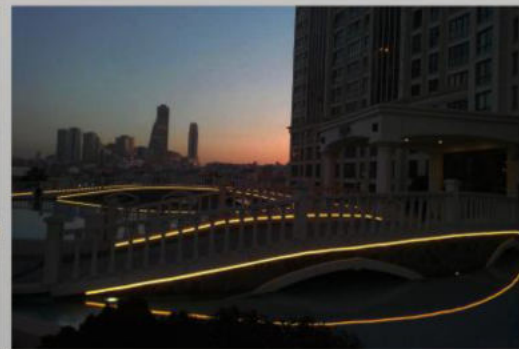
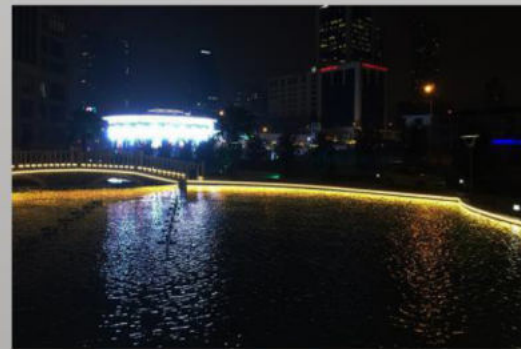
TURKCELL FUAR ALANI

BARCELONA



DELUXIA PALAS

ATAŞEHİR / İSTANBUL



www.airled.com.tr



AND PASTEL

KARTAL / İSTANBUL

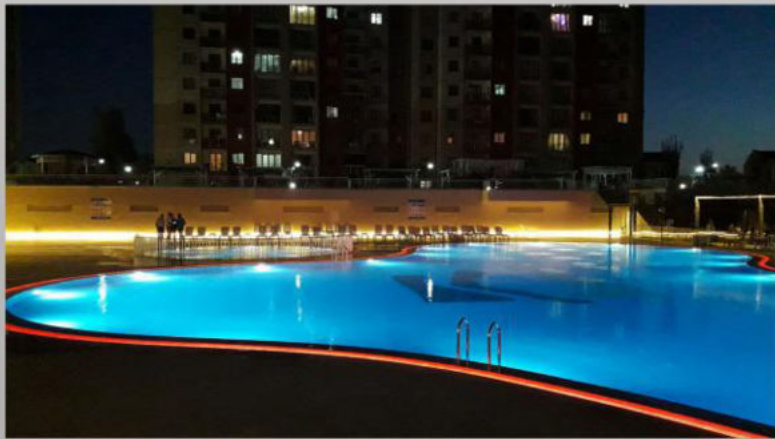


www.airled.com.tr



ALEMDAĞ KONUTLARI

ÇEKMEKÖY / İSTANBUL





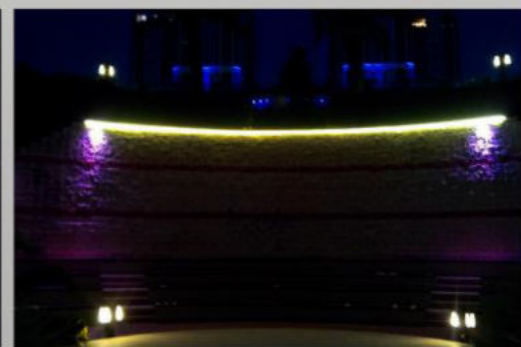
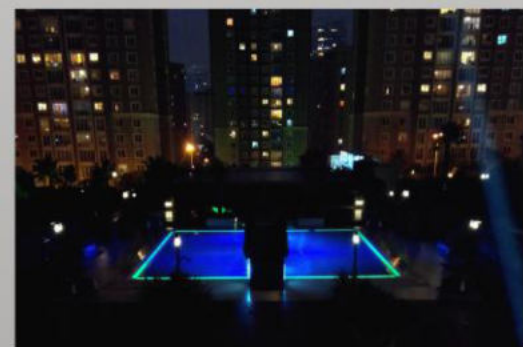
ACUN MEDYA
LEVENT / İSTANBUL





UPHILL COURTE

ATAŞEHİR / İSTANBUL





BİLİYOR MUYDUNUZ?

01

ISI DAYANIMI

İster 200 derece kaynar suda, ister -40 derecede soğukta **KULLANILABİLDİĞİNİ**

02

KİMYASAL DAYANIMI

Klor, asit, baz, tuz vb. kimyasallardan **ETKİLENMEDİĞİNİ**

03

4 MEVSİM KULLANIM

Dolu, kar, yağmur, rüzgar, güneş ve ultraviyole ışınlarından **ZARAR GÖRMEDİĞİNİ**

04

YANGIN DESTEKLEMEZ

Isınmadığını, sı yaymadığını, alev almadığını, zararlı gaz çıkartmadığını ve yangına destek **VERMEDİĞİNİ**

05

ESNEK MALZEME

Eğilip bükülebildiğini ve uygulanacak yüzeye göre istenilen şekli **VERİLEBİLDİĞİNİ**

06

UYGULAMA KOLAYLIĞI

Cam, mermer, granit, ahşap zemin uygulamalarımızda delme, kırma yapmadığımız, vida vb. yardımcı montaj elemanları **KULLANMADIĞIMIZI**

07

DÜŞÜK VOLTAJ

12 veya 24 Volt olarak üretim yaptığımız için elektrik çarpması riskinin **OLMADIĞINI**

EKSİZ ÜRETİM

İstenilen çap ve uzunlukta **EKSİZ 80 metreye kadar tek parça üretim YAPABİLDİĞİMİZİ**

08

KURUMSAL KULLANIM

Kurumsal marka ve logonuzu yazdığımızı ve yazının hiç bir şekilde deforme **OLMADIĞINI**

09

İŞ SAĞLIĞI

İş Sağlığı ve Güvenliği standartlarına uygun %100 Hijyenik bir ürün **OLDUĞUNU**

10

UZUN ÖMÜR

AIRLED Profil ekranımızı ömrünün uygulama yapılan yerin ömrü kadar **OLDUĞUNU**

11

PATENT

AIRLED ürünümüzün 3 ayrı patentle **KORUMA ALTINA ALINDIĞINI**

12

ULUSLARARASI TEST

Ulusal ve uluslararası IP68, CE, TEST, ISO 9001, ISO 14001, ISO 45001 ve ISO 10002 **BELGELERİMİZİN OLDUĞUNU**

13

MUTLULUK KAYNAĞI

Dünyanın her yerinde müşteri memnuniyetini sağlamanın **MUTLULUĞUNU YAŞADIĞIMIZI**

14



www.cbateknoloji.com



**CBA TEKNOLOJİ
AYDINLATMA ÜRÜNLERİ ÜRETİMİ VE
DANIŞMANLIK A.Ş.**

Atatürk Mah.Ertuğrul Gazi Sk.
Metropol İstanbul A Blok No:2E/331
Ataşehir / İSTANBUL

Tel : 0216 709 11 92
Fax : 0850 522 34 03

info@cbateknoloji.com